

SPECIFICATIONS
SDX150E
TELESCOPIC CONVEYOR



Optional equipment may be shown

DESCRIPTION

Mobile Telescoping Conveyor with the following features:

- 914mm (36") wide heavy duty 150' long telescoping conveyor.
- Counterweighted design keeps axle out of stockpile
- 3 Position Axle (Inline/Transverse/Radial)
- Full Automation Package
- Integral King pin / Pivot Point

DIMENSIONS AND CAPACITIES

Length – working (Max)	45.72m (150'-0")
Height – working (Max)	16.76m (55')
Length – transport	25.73m (84'-5")
Width – transport	3.63m (11'-11")
Height – transport	4.11m (13'-6")
Maximum Production Rate	725 MTPH (800 TPH)

OUTER CONVEYOR

Belt width	914mm (36")
Belt spec	Heavy Duty Plain, 3-Ply, 1/4 X 1/16
Hopper	Wear Plate Rock Box
Scraper	Urethane Blade
Pulley Adjuster	Screw Type
Under Hopper	35 Degree Impact – Cema C
Conveyor	35 Degree – Cema B
Return Idlers	Self Cleaning Rubber Disc – Cema C
Electric Head Motor	40hp WEG
Gear Box	Dodge

INNER CONVEYOR

Belt width	914mm (36")
Belt spec	Heavy Duty Plain, 3-Ply, 1/4 X 1/16
Scraper	Urethane Blade
Pulley Adjuster	Remote Hydraulic
Conveyor	35 Degree – Cema B
Return Idlers	Self Cleaning Rubber Disc – Cema C
Electric Head Motor	Dual 15hp WEG
Gear Box	Dodge

ELECTRIC POWERUNIT AND HYDRAULICS

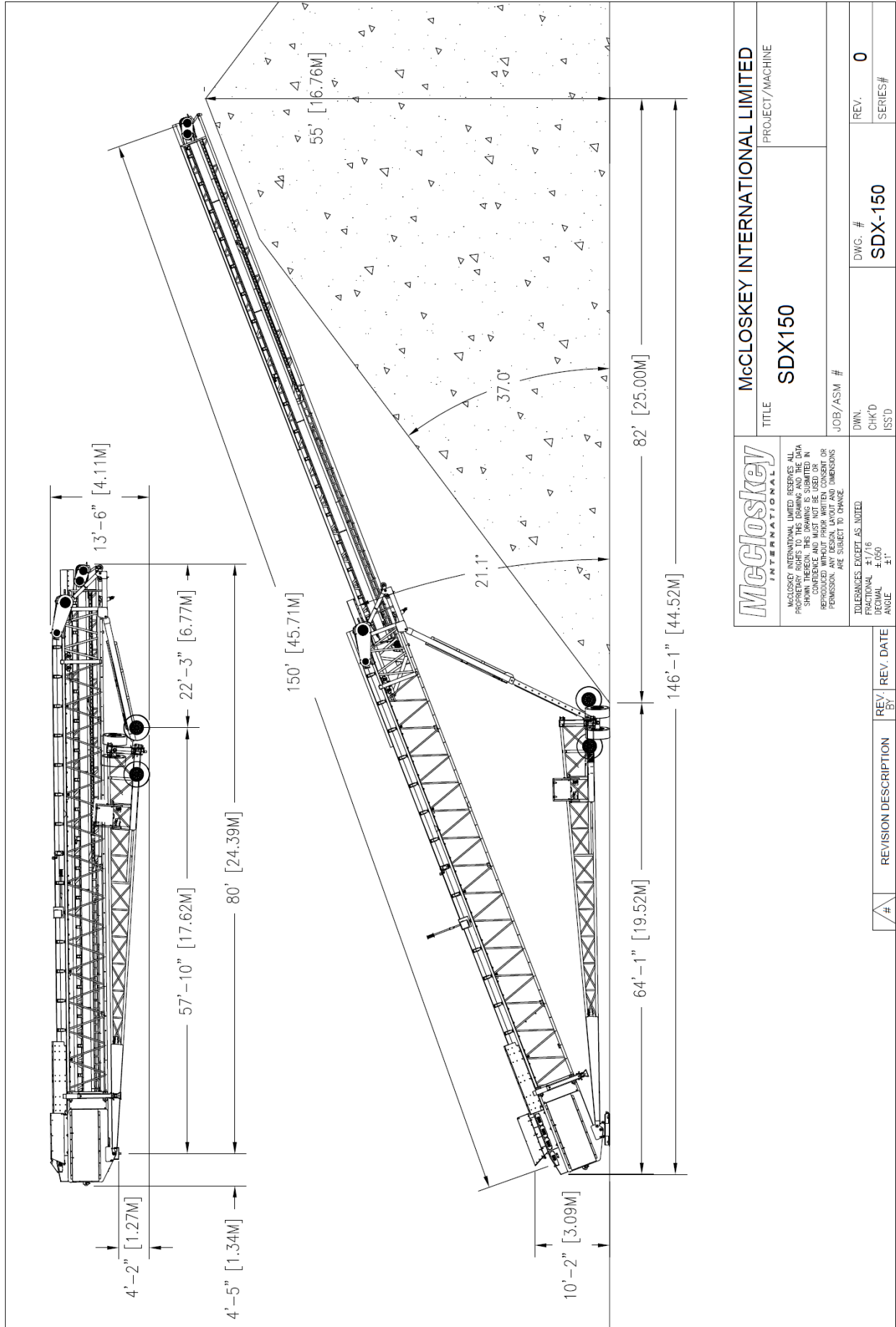
Electric Motor	WEG 20HP
Engine Speed	1800 rpm
Hydraulic tank capacity	50 US gal
Drive Type	Hydraulic

AXLE

Working Axle Type	Lift Axle
Wheels and Tires	385 Outriggers
Transport Axle Type	Walking Beam
Wheels and Tires	8x 11r-22.5
Wheel Drive	Twin Reducer Style
Brake Type	Air

SAFETY FEATURES

- External belt alignment points.
- External grease points.
- Engine safety shutdown systems.
- Full safety guarding for nip points.



	McCloskey INTERNATIONAL LIMITED PROJECT/MACHINE
	SDX150
TITLE	JOB/ASM #
McCloskey INTERNATIONAL LIMITED RESERVES ALL PROPRIETARY RIGHTS TO THIS DRAWING AND THE DATA HEREIN. THIS DRAWING IS THE PROPERTY OF McCloskey INTERNATIONAL LIMITED AND MUST NOT BE REPRODUCED OR REPRODUCED WITHOUT PRIOR WRITTEN CONSENT OR PERMISSION. ANY DESIGN, LAYOUT AND DIMENSIONS ARE SUBJECT TO CHANGE.	DWN. # CHK'D # ISS'D #
TOLERANCES EXCEPT AS NOTED FRACTIONAL ±1/16 DECIMAL ±.000 ANGLE ±1°	DWG. # SDX-150
#	REV. # 0

#	REVISION DESCRIPTION	REV. BY	REV. DATE