

***SPECIFICATIONS***  
***SDX150***  
***TELESCOPIC CONVEYOR***



*Optional equipment may be shown*

**DESCRIPTION**

Mobile Telescoping Conveyor with the following features:

- 914mm (36") wide heavy duty 150' long telescoping conveyor.
- 127hp Cat 4.4 Engine.
- Counterweighted design keeps axle out of stockpile
- 3 Position Axle (Inline/Transverse/Radial)
- Full Automation Package
- Integral King pin / Pivot Point

**DIMENSIONS AND CAPACITIES**

Length – working (Max)	45.72m (150'-0")
Height – working (Max)	16.76m (55')
Length – transport	25.73m (84'-5")
Width – transport	3.63m (11'-11")
Height – transport	4.11m (13'-6")
Maximum Production Rate	725 MTPH (800 TPH)

**OUTER CONVEYOR**

Belt width	914mm (36")
Belt spec	Heavy Duty Plain, 3-Ply, 1/4 X 1/16
Hopper	Wear Plate Rock Box
Scraper	Urethane Blade
Pulley Adjuster	Screw Type
Under Hopper	35 Degree Impact – Cema C
Conveyor	35 Degree – Cema B
Return Idlers	Self Cleaning Rubber Disc – Cema C

**INNER CONVEYOR**

Belt width	914mm (36")
Belt spec	Heavy Duty Plain, 3-Ply, 1/4 X 1/16
Scraper	Urethane Blade
Pulley Adjuster	Remote Hydraulic
Conveyor	35 Degree – Cema B
Return Idlers	Self Cleaning Rubber Disc – Cema C

**POWERUNIT AND HYDRAULICS**

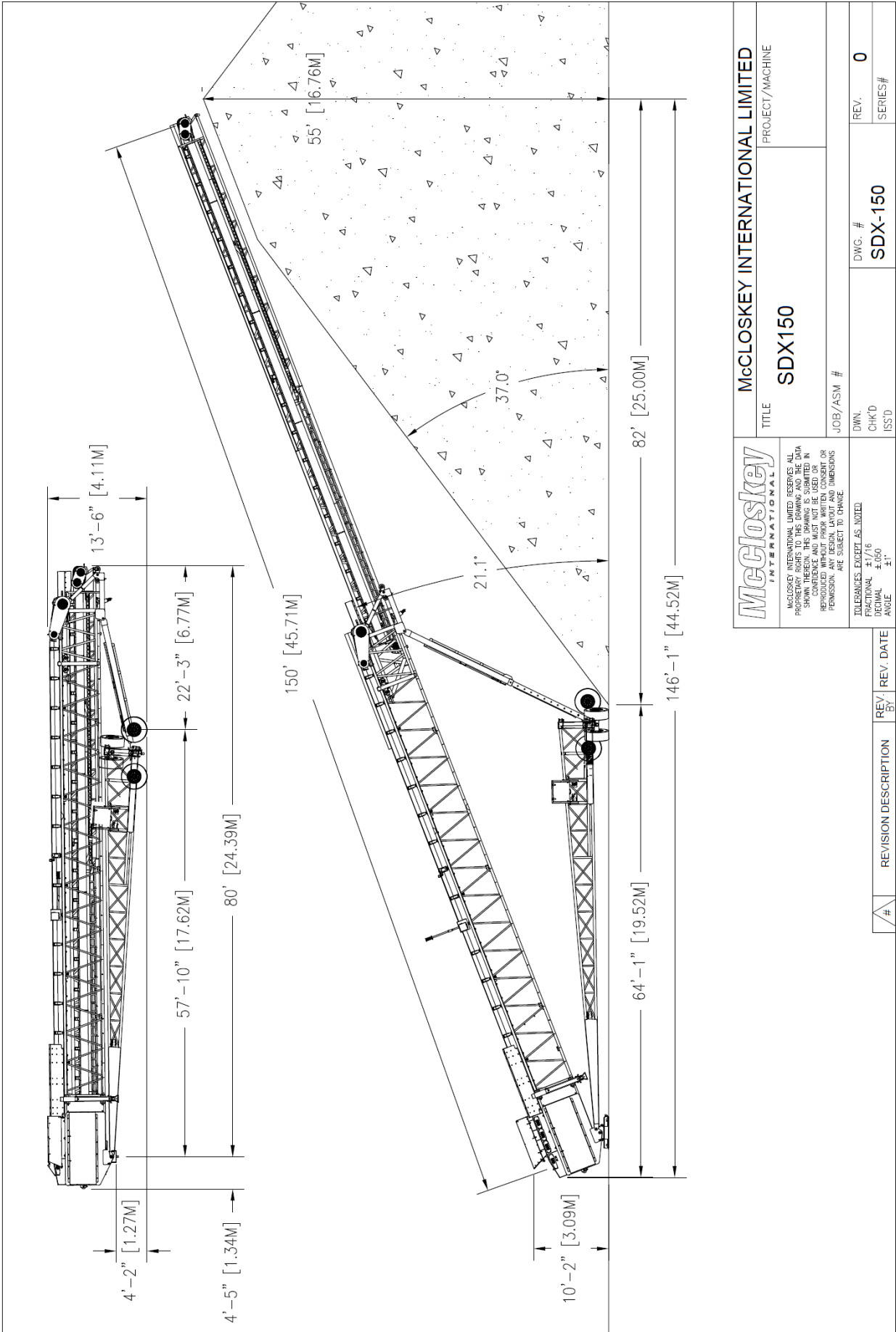
Engine	Cat 4.4
Engine power	96kw (127 hp)
Engine Speed	2200 rpm
Diesel tank capacity	386 L (101.9 US gal)
Hydraulic tank capacity	584 L (154.3 US gal)
Drive Type	Hydraulic

**AXLE**

Working Axle Type	Lift Axle
Wheels and Tires	385 Outriggers
Transport Axle Type	Walking Beam
Wheels and Tires	8x 11r-22.5
Wheel Drive	Twin Reducer Style
Brake Type	Air

**SAFETY FEATURES**

- External belt alignment points.
- External grease points.
- Engine safety shutdown systems.
- Full safety guarding for nip points.



	McCloskey INTERNATIONAL LIMITED PROJECT/MACHINE
	SDX150
TITLE	JOB/ASM #
McCloskey INTERNATIONAL LIMITED RESERVES ALL PROPRIETARY RIGHTS TO THIS DRAWING AND THE DATA HEREIN. THIS DRAWING IS THE PROPERTY OF McCloskey INTERNATIONAL LIMITED AND MUST NOT BE REPRODUCED OR REPRODUCED WITHOUT PRIOR WRITTEN CONSENT OR PERMISSION. ANY DESIGN, LAYOUT AND DIMENSIONS ARE SUBJECT TO CHANGE.	DWN. # CHK'D # ISS'D #
TOLERANCES EXCEPT AS NOTED FRACTIONAL ±1/16 DECIMAL ±.000 ANGLE ±1°	DWG. # SDX-150
#	REV. # 0

#	REVISION DESCRIPTION	REV. BY	REV. DATE