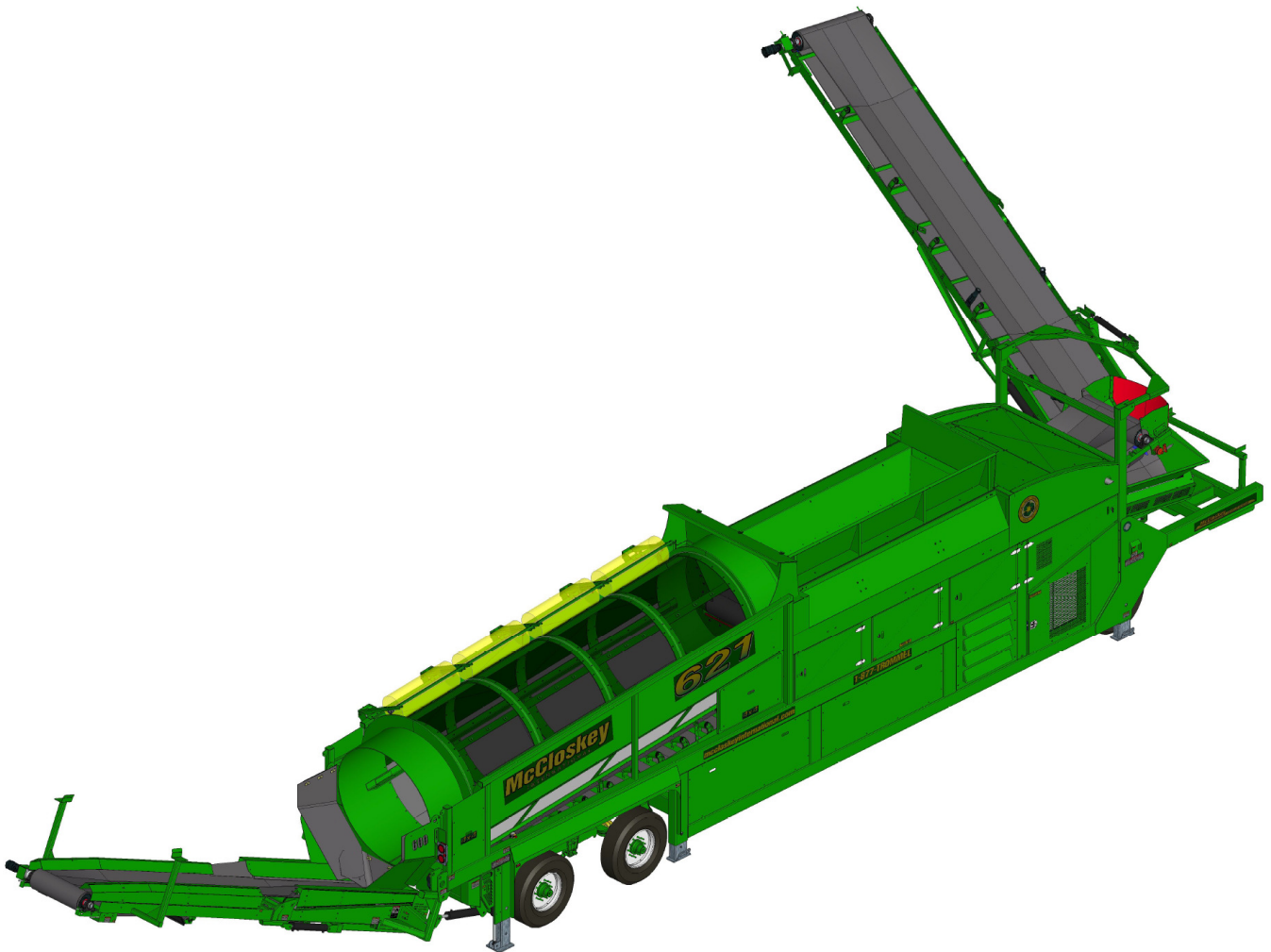
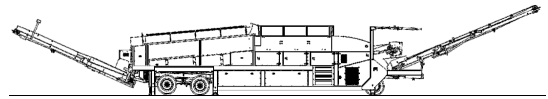


SPECIFICATIONS

621RE



Note: Optional equipment may be displayed



DESCRIPTION

Heavy duty mobile trommel with the following features:

- 6'x21' heavy duty trommel drum
- 174Hp diesel engine
- Wheel mobile or hydraulic raise/lower track bogie system
- Integrated hydraulic folding stockpiling conveyors
- Remote control radial conveyor
- Fast on site setup time (10 minutes)

SAFETY FEATURES

- External belt alignment points
- External grease points
- Engine safety shutdown systems
- Full safety guarding for nip points

DIMENSIONS AND WEIGHTS

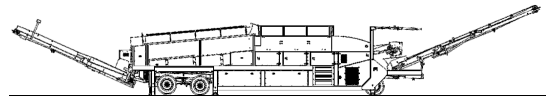
Transport length	18.52m (60' – 9")
Transport width (wheeled)	2.59m (8' – 6")
Transport width (tracked)	2.94m (9' – 8")
Transport height	4.11m (13' – 6")
Weight (wheeled)	23,400 Kgs (51,500 lbs.)
Weight (tracked)	33,700 Kgs (74,250 lbs.)
Load height	3.2m (10' – 6")
Working length	29.13m (95' – 6½")
Working width	15.1m (49' – 6½")
Working height	5.11m (16' – 9")

CAPACITIES

Diesel tank capacity (wheeled)	1210 L (320 US gal)
Diesel tank capacity (tracked)	680 L (180 US gal)
Hydraulic tank capacity	954 L (252 US gal)
Hopper capacity	5 m ³ (6.5 yd ³)

FEED CONVEYOR

Belt width	1050mm (42")
Belt spec	Plain 630/4 6+2
Drive drum dia.	323mm (12.75")
Tail drum dia.	305mm (12")
Gearbox	Brevini CTD2051
Gearbox ratio	34,7:1
Motor	Sam Hydraulik BRZ250
• Flow rate	83 l/m (22 US g/m)
• Adjustable speed	Yes
• Maximum speed	10 rpm

**FINES CONVEYOR**

Belt width	1050mm (42")
Belt spec	Plain 400/3 4+2
Drive drum dia.	254mm (10")
Tail drum dia.	305mm (12")
Motor	White DR33
• Flow rate	75 l/m (20 US g/m)
• Maximum speed	143 rpm

RADIAL CONVEYOR

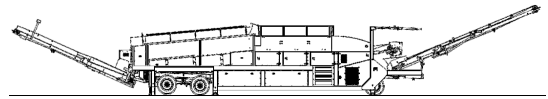
Stockpile height	5.11m (16' – 9")
Belt width	1050mm (42")
Belt spec	Plain - 400/3 4+2
Drive drum dia.	254mm (10")
Tail drum dia.	254mm (10")
Motor	White DR33
• Flow rate	75 l/m (20 US g/m)
• Maximum speed	143 rpm

OVERSIZE CONVEYOR

Stockpile height	3.47m (11 - 4½")
Belt width	900mm (36")
Belt spec	Chevron - 315/3 3+1.5
Drive drum dia.	254mm (10")
Tail drum dia.	254mm (10")
Motor	White DR33
• Flow rate	68 l/m (18 US g/m)
• Maximum speed	130 rpm
• Adjustable speed	Yes

TROMMEL (DRUM)

Dimensions	1.83m x 6.4m (6' x 21')
Screening area	27.5 m ² (296 ft ²)
Trommel angle	5 deg
Trommel motor	Poclain MSE02 (22.2 cc/rev)
Drive system	Direct drive with 18x7 rubber wheels
Hydraulic flow rate	170 l/m (45 US g/m)
Trommel speed	10 – 30 rpm
Adjustable speed	Yes
Longitudinal trommel supports	5 angle type lifters
Cleaning brushes	Ground adjustable Ø16x50" polyester brushes

**POWERUNIT AND HYDRAULICS**

Engine power	174 HP
Engine speed	2200 rpm
Flywheel pump 1	David Brown R5000
LH PTO pump 2	Vicker's V20
Total system flow	397 l/m (105 US g/m)
Hydraulic tank capacity	940 L (250 US Gals)
Hydraulic tank ratio	2.4 : 1
Hydraulic oil cooler	Yes

ELECTRICS

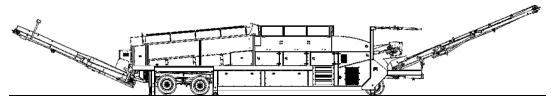
Emergency stops	4 off, located on all 4 corners of the machine
Chassis cabling	Armored cable
Start Siren	Yes (10 sec delay)
Engine shutdowns:	Low oil pressure High water temp Air filter blockage (selectable) Fuel contamination Low hydraulic tank level
Engine room light	Yes
Remote radial	Yes - 6 function timed
Radio control tracks	Yes - hetronic system
Pendant track control	Yes - plugged at powerunit

TRACKS

Width	500mm (19.7")
Length	3710mm (12' - 2") crs
Height	739mm (29.4")
Gearbox	Bonfiglioli 707
Ratio	122:1
Motor	Rexroth 63
Speed max	1.5 Kph (0.9 Mph)
Flow rate	75 l/m (20 US g/m)
Attachment to chassis	Bolt on for quick change

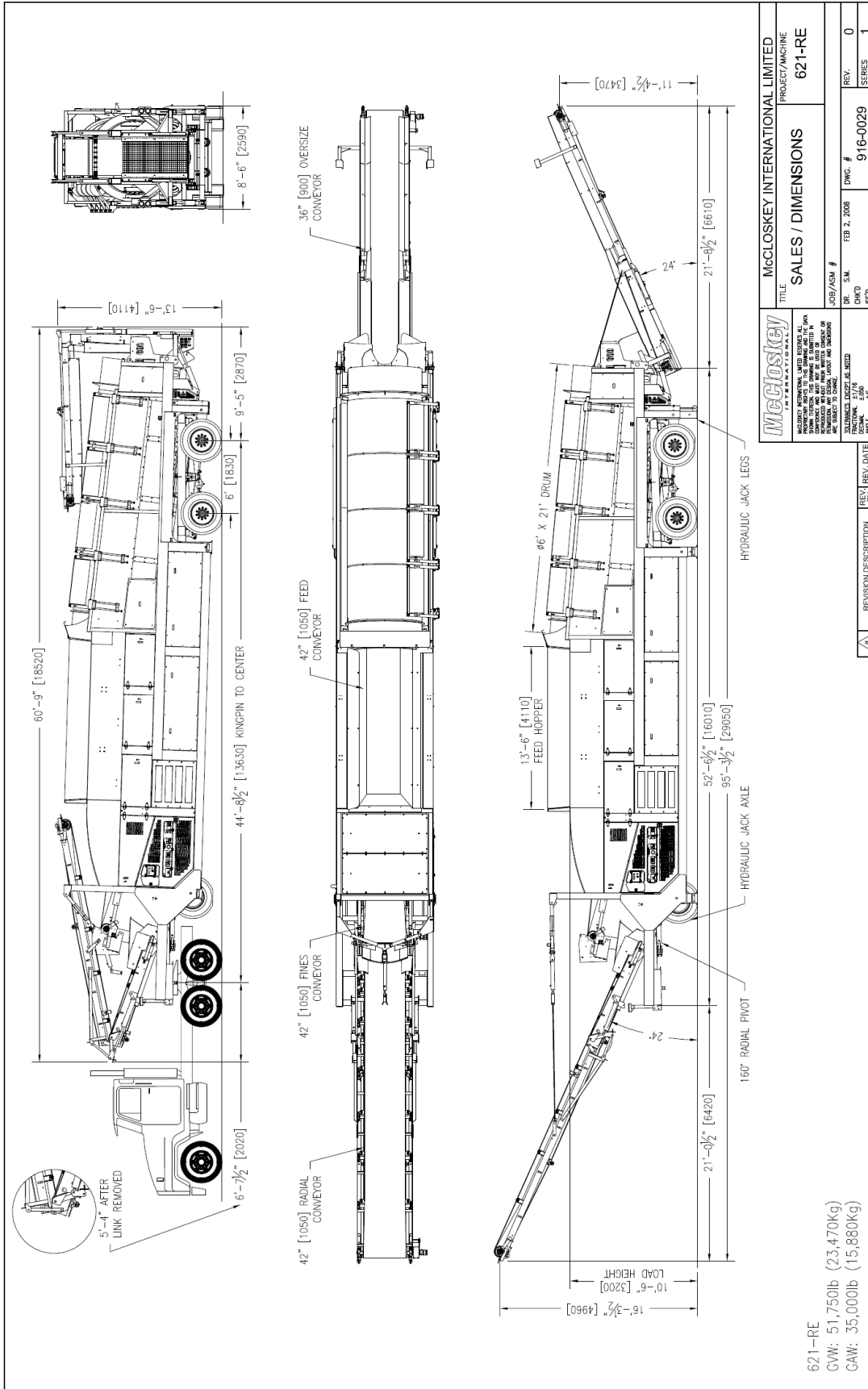
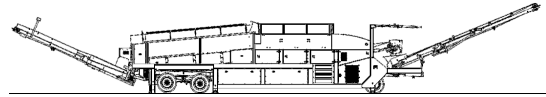
WHEELS

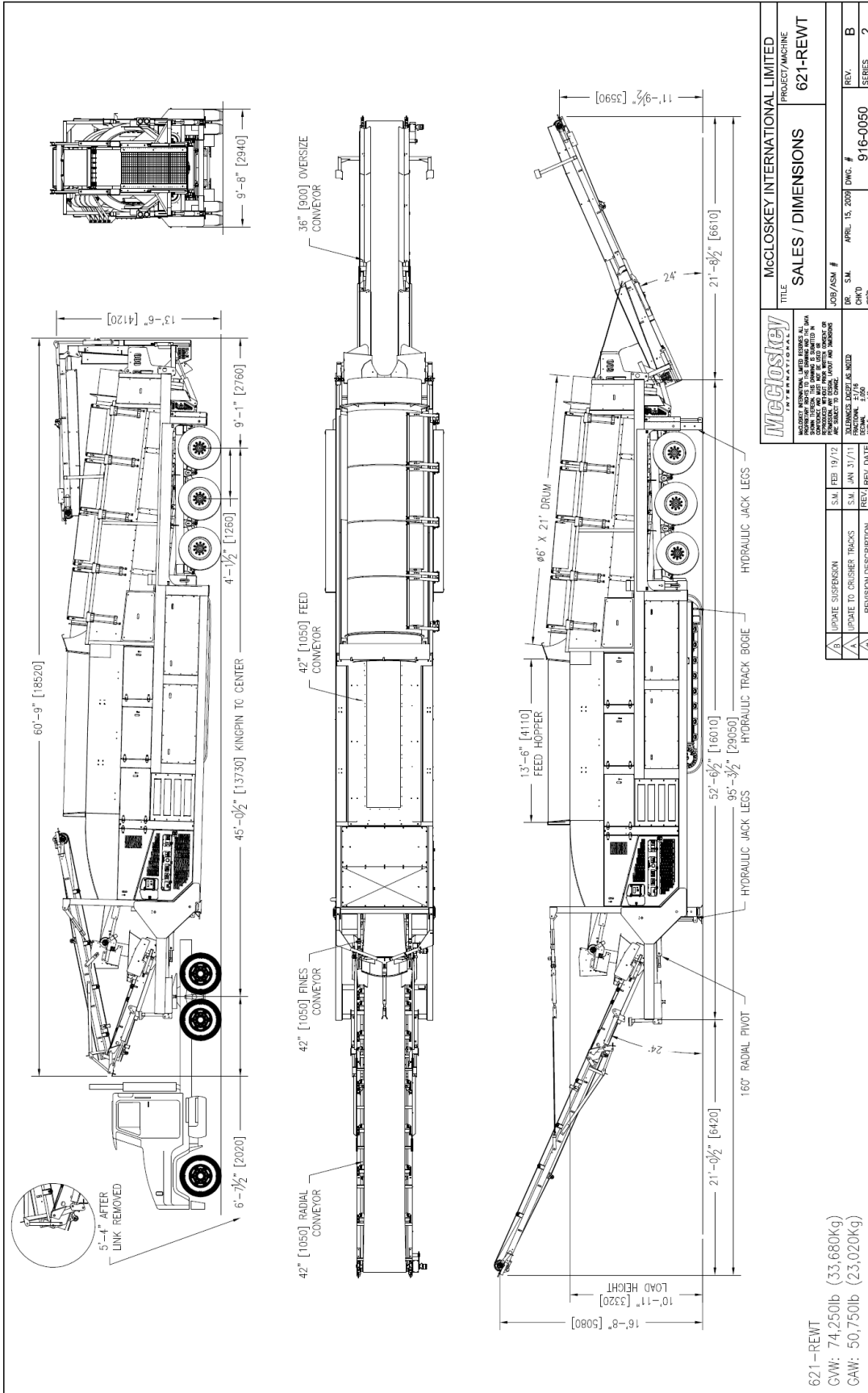
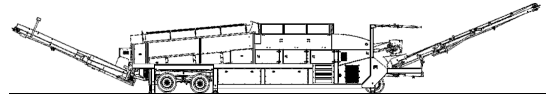
Axles (wheeled)	Spread Tandem Axle 1.83m (72")
Axles (tracked)	Spread Tri-axle 1.25m (49")
Wheels (wheeled)	Single 315/80R22.5 (4 tires)
Wheels (tracked)	Dual wheel 11/R22.5 (12 tires)
Spring suspension	Yes
Brakes	Yes
Mudguards	Yes
ABS	Optional



OPTIONS

- Hydraulic tipping grid
- Double brushes
- Auto reversing fan
- Auxiliary hydraulic circuit
- Punch plate screens
- Remote feeder on/off
- Single or double deck live head
- Hydraulic raise/lower track system





McCloskey INTERNATIONAL		McCloskey INTERNATIONAL LIMITED	
INDUSTRY REPRESENTATIVE LIMITED RIGHTS AS SHOWN. ALL DIMENSIONS ARE TO CENTER UNLESS SPECIFICALLY NOTED OTHERWISE. ALL DIMENSIONS ARE TO CENTER UNLESS SPECIFICALLY NOTED OTHERWISE. ALL DIMENSIONS ARE TO CENTER UNLESS SPECIFICALLY NOTED OTHERWISE.		PROJECT/MACHINE 621-REWT	
TITLE SALES / DIMENSIONS		JOB/ASM #	REV. #
DESIGNED BY S.M.		DATE APRIL 15, 2009	DWG. # 916-0050
CHECKED BY S.M.		REV. DATE	SERIES B
APPROVED BY S.M.		FUNCTIONALITY	SERIES 2
REVISION DESCRIPTION			
A	UPDATE SUSPENSION	S.M.	FEB 19/12
A	UPDATE TO CRUISER TRACKS	S.M.	JAN 31/11
A		REV.	REV. DATE

621-REWT
 CW: 74,250lb (33,680kg)
 CAW: 50,750lb (23,020kg)